

# Governor Dashboard (2013)

## St John's Angell Town CofE Primary School

LA: Lambeth

DFE: 2083466

Date produced: January 2014

Version 2

The Governor Dashboard has been produced by FFT, working in partnership with the National Governors' Association and the Wellcome Trust. The dashboard will help school governors to hold schools to account, support and challenge the leadership team and make more informed strategic decisions.

The dashboard can be used to answer **six key questions**:

1. How does attainment and pupil progress compare to the national average?
2. How are we performing in different subjects?
3. Do we have any under-performing pupils?
4. How might the context of our school affect our performance?
5. How does pupil attendance compare to the national average?
6. What are the strengths and weaknesses of our school?

### Guidance for governors

**Gauges:** underneath the gauges we indicate whether results and progress are in line with the national average, or significantly above or below the national average.

**Strengths & Weaknesses:** these are relative to your school and calculated using Added Average Point Score over 3 years (minimum 5 pupils in a group).

**Statistical significance:** green stars (★) and red circles (●) highlight where pupil progress is significantly above or below the national average.

**Small pupil cohorts:** for small pupil cohorts we will suppress the actual data with a diamond (◆). Where it is not possible to calculate a figure or if data is not available this will be shown by a dash (-).

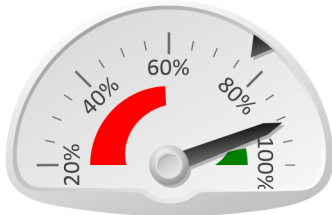
**Data sources:** the governor dashboard is generated using data from FFTLive which includes data sourced from the DFE (National Pupil Database) and data calculated by FFT. The headline performance indicators will be consistent with RAISEonline and the DFE School Performance Tables and data.

Further support materials for governors, including a brief training guide can be downloaded from the FFT website at [www.fft.org.uk](http://www.fft.org.uk)

# St John's Angell Town CofE Primary School (2013)

## Pupil Results - Attainment (2013)

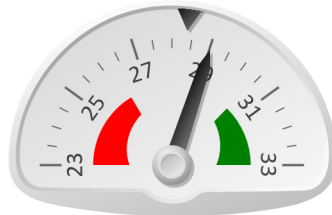
% Level 4+ (Re, Wri, Ma)



**91%**

Results are in line with the national average (77%)

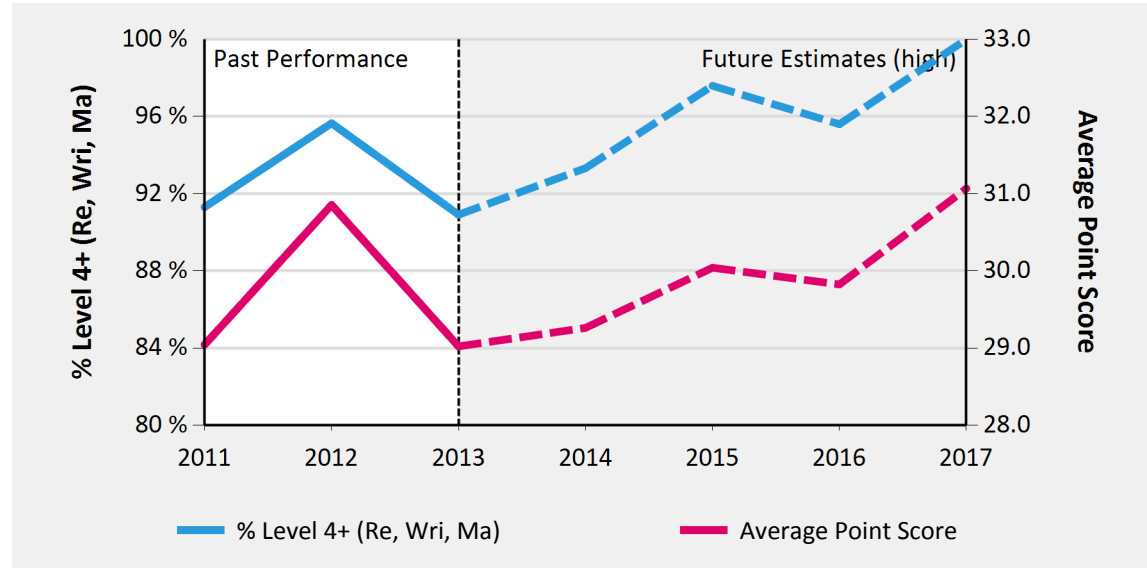
Average Point Score



**29.0**

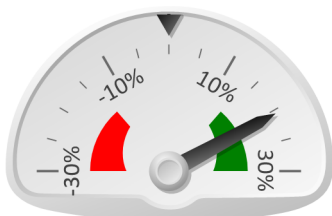
Results are in line with the national average (28)

## Key Stage 2 Headline Performance



## Pupil Progress - Achievement (2013)

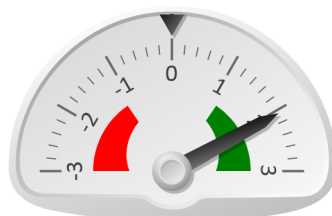
% Level 4+ (Re, Wri, Ma)



**21%**

Progress is significantly above the national average of zero

Average Point Score



**2.1**

Progress is significantly above the national average of zero

## Key Stage 2 Performance Summary

	Actual Results			Pupil Progress (Act vs Est)		
	2011	2012	2013	2011	2012	2013
Number of Pupils	23	23	22	-	-	-
% Level 4+ (Re, Wri, Ma)	★ 91%	★ 96%	91%	★ 37%	★ 31%	★ 21%
% Level 5+ (Re, Wri, Ma)	17%	30%	23%	★ 15%	★ 24%	★ 15%
Average Point Score	29.0	★ 30.9	29.0	★ 3.1	★ 3.5	★ 2.1
% 2 Levels Progress - Reading	96%	100%	95%	10%	11%	11%
% 2 Levels Progress - Writing	91%	100%	100%	5%	★ 13%	7%
% 2 Levels Progress - Maths	95%	96%	95%	★ 16%	11%	11%

## Relative Strengths and Weaknesses (3 years)

Stronger Areas	Weaker Areas
SEN School Action + Lower ability SEN School Action	Joined school in Yrs 5 or 6 Middle ability Girls

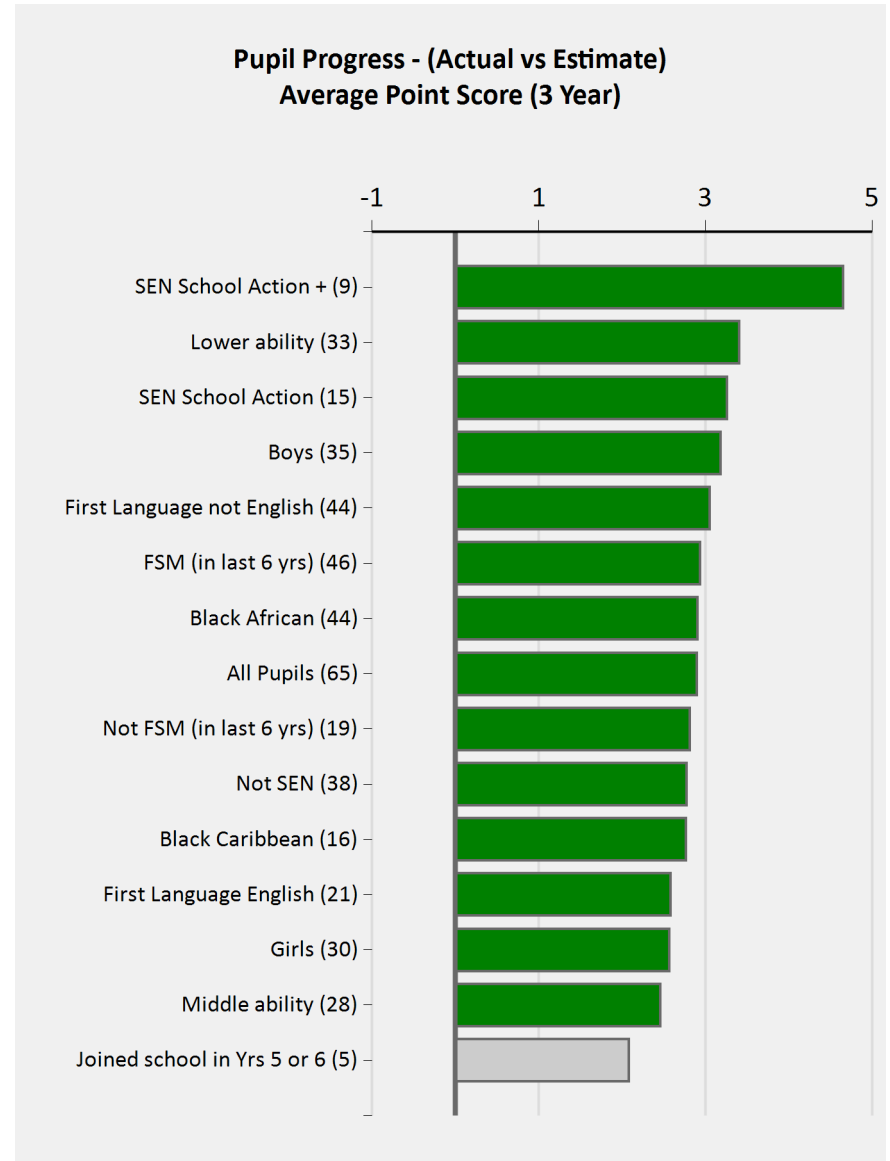
# St John's Angell Town CofE Primary School (2013)



## Key Stage 2 Subject Performance

	Actual Results			Pupil Progress (Act vs Est)		
	2011	2012	2013	2011	2012	2013
<b>Pupils</b>	23	23	22	-	-	-
<b>Reading</b>						
% Level 4+	96%	96%	91%	★ 16%	★ 13%	6%
% Level 4B+	★ 96%	★ 96%	91%	★ 36%	★ 27%	★ 19%
% Level 5+	52%	★ 74%	59%	★ 26%	★ 42%	★ 26%
Average Point Score	29.5	30.4	29.4	★ 3.2	★ 3.6	★ 1.9
<b>Writing</b>						
% Level 4+	91%	★ 100%	91%	★ 26%	★ 22%	9%
% Level 5+	30%	32%	23%	★ 24%	★ 18%	3%
Average Point Score	★ 27.9	28.5	27.6	★ 3.2	★ 2.2	0.9
<b>Mathematics</b>						
% Level 4+	96%	96%	91%	★ 18%	★ 15%	★ 12%
% Level 4B+	★ 91%	91%	86%	★ 32%	★ 25%	★ 23%
% Level 5+	35%	★ 74%	★ 64%	★ 20%	★ 50%	★ 39%
Average Point Score	29.1	30.4	30.0	★ 3.0	★ 3.7	★ 3.0

## Pupil Groups: Achievement over 3 years



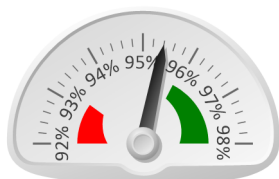
## Pupil Context (Year 6, 2013)

		Pupils	School	National
<b>Summary</b>	All Pupils	22	100%	100%
	Girls	11	50%	49%
	Boys	11	50%	51%
<b>Prior Attainment</b>	Higher ability	2	9%	33%
	Middle ability	9	41%	34%
	Lower ability	10	45%	33%
<b>SEN</b>	SEN School Action	4	18%	12%
	SEN School Action +	1	5%	8%
	SEN Statement	1	5%	3%
	Not SEN	16	73%	77%
<b>Free School Meals</b>	FSM (in last 6 yrs)	14	64%	31%
	Not FSM (in last 6 yrs)	8	36%	69%
<b>Ethnicity</b>	Black Caribbean	7	32%	3%
	Black African	14	64%	4%
	Any Other	1	5%	3%
<b>First Language</b>	First Language not English	12	55%	17%
	First Language English	10	45%	83%
<b>Mobility</b>	Joined school in Yrs 5 or 6	1	5%	8%

## School Absence (Year 1 to Year 6, 2013)

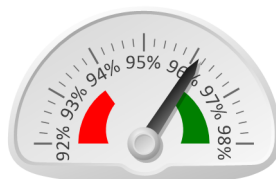
		Pupils	Absence		Persistent Absentees	
			School	National	School	National
<b>Summary</b>	All Pupils	176	4%	5%	4%	4%
	Girls	88	4%	5%	2%	4%
	Boys	88	4%	5%	6%	4%
<b>Prior Attainment</b>	Higher ability	24	2%	4%	0%	2%
	Middle ability	61	3%	5%	0%	3%
	Lower ability	85	5%	6%	7%	7%
<b>SEN</b>	SEN School Action	30	4%	6%	3%	7%
	SEN School Action +	23	6%	6%	13%	8%
	SEN Statement	4	♦	7%	♦	11%
	Not SEN	119	4%	4%	3%	4%
<b>Free School Meals</b>	FSM (in last 6 yrs)	108	4%	6%	5%	8%
	Not FSM (in last 6 yrs)	68	4%	4%	3%	3%
<b>Ethnicity</b>	White	9	3%	5%	0%	4%
	Black Caribbean	44	6%	5%	11%	6%
	Black African	102	3%	4%	1%	3%
	Other Asian	3	♦	5%	♦	4%
	Any Other	17	6%	5%	6%	5%
<b>First Language</b>	First Language not English	84	3%	5%	2%	5%
	First Language English	92	5%	5%	5%	4%

Year 1 Attendance



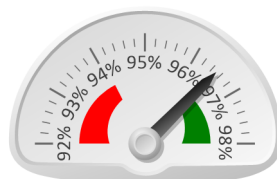
95.4%

Year 2 Attendance



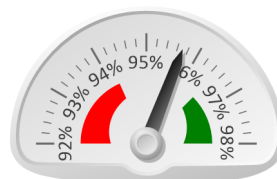
96.1%

Year 3 Attendance



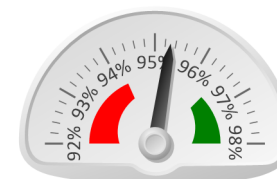
96.5%

Year 4 Attendance



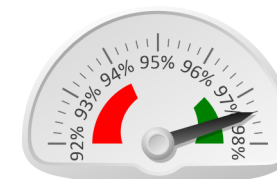
95.7%

Year 5 Attendance



95.3%

Year 6 Attendance



97.4%